

EPIC

East of England Production Innovation Centre

www.epic-tv.com

Studio E Re-opens for 'Question Time'



The 'Question Time' roadshow moved into Studio E @ EPIC in late May, the first network production to use the space following extensive building work and technical refurbishment at the Centre.

A preliminary lighting rig took place on Wednesday afternoon, a full 'set and light' session took place on Thursday morning, and by mid afternoon, the studio was ready for trails and rehearsals. Recording and transmission took place during the evening.

"Thank you for all your help and assistance," said Production Manager Karen Davies after the show. "It was a very successful visit with good viewing figures to boot... thanks to all your staff who assisted us so well on the day."

An audience of 150 gave the panellists a lively evening, with questions ranging from the Labour leadership to the Health Service. 'Question Time' is produced for the BBC by Mentorn Oxford.

Studio E is the largest studio at EPIC. It has a saturated lighting grid, and six Thompson Broadcast widescreen digital cameras. Epic also has two smaller studios - both with four SD/HD lightweight studio cameras. One is being re-equipped with a new Orad Virtual Studio system.

Adrenaline quickens HD pulse for EPIC



Two brand new Avid Adrenaline suites have been commissioned at EPIC, opening the door to High Definition post production at the Centre.

A new multi-standard broadcast HDCAM VTR, and new HDV machines (1080i and 720p) mean the facility is well equipped for tomorrow's programmes as well as today's.

One of the first to use the new Avid facility was BBC East editor, Andy Holland.

"They're brilliant suites to use - it's a great bonus to have such high standard professional equipment at a facility in the area," said Andy.

Over coming weeks, a further 54 Final Cut Pro workstations will be installed for education and training - and five more full standard FCP suites, capable of uncompressed SD and HD video, all linked to 45 terrabytes of storage.

The suites can be used with a range of origination of formats at EPIC - all the Sony Beta family, plus DV and DVC Pro.

NSAD Film & Video Degree

The first intake of degree students will arrive at EPIC in September to begin a degree course in Film and Video offered by Norwich School of Art and Design. It will be a two year foundation degree with the option to stay on a third year for B.A. (Hons). Full details can be found at <http://www.nsad.ac.uk>

The EPIC Offer

As a Creative Industries Enterprise Hub, EPIC's role is to support the production and communications communities in the region and nationally. It achieves that by offering facilities, supporting businesses and promoting related education and training. EPIC will also become a centre for development and hosting of innovative communications and broadcast services.

Industry Standard Broadcast and Production facilities

EPIC provides production facilities for local and national broadcasters. We have three TV studios, one a large L.E./Drama Studio with six Thompson digital widescreen cameras, and all the technical and back-up facilities one would expect of a national production centre. There are two smaller studios, one of them a brand new Orad Virtual Studio. Both are equipped with four lightweight cameras capable of outputting SD or HD video. All studios have their own dedicated production and sound galleries.

EPIC offers Avid Adrenaline and Final Cut Pro digital editing suites (HD and SD), and sixty-four track digital audio recording and post-production suites capable of Dolby 5.1 and 6.1. Equipment available for hire includes Thomson Broadcast Cameras, Sony Z1 HDV Cameras, Broadcast VTRs (DigiBeta, DV, DVCam and HDV) and location lighting kits.

Education and Training

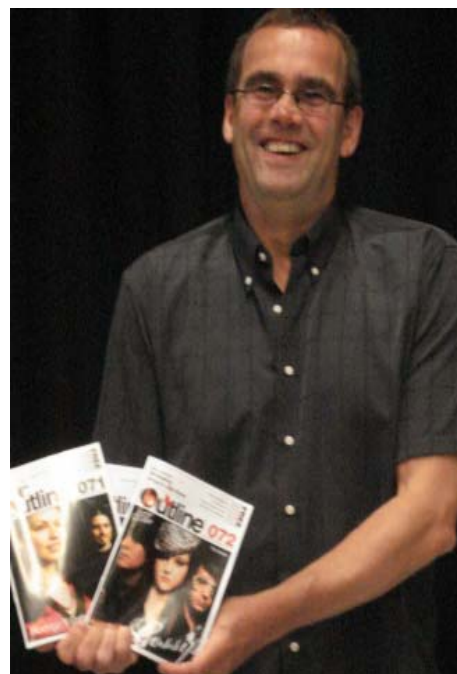
Norwich School of Art and Design has based a Film and Video foundation and honours degree courses at the Centre. The facilities - including 52 networked Final Cut Pro Workstations - are also available for other educational and training organisations, and EPIC itself offers a growing list of vocational courses and training events. Contact the Director for details. Training provision includes access to studios, sound post production and over 50 Final Cut Pro Edit Work Stations.

Business Support

EPIC offers space for production teams and companies and office accommodation for existing or start-up companies. Incubator facilities are available for Creative Industry Start-Ops. The Centre offers a high level of Broadband Connectivity, instantly available to clients. There is a close relationship with Business Link and specialist Creative Industries business advisors.

For information and prices on any of the above, contact Mark Wells on 07796995962, mark.wells@epic-tv.com

The East of England Production Innovation Centre is owned and operated by Norfolk County Council with the support of The East of England Development Agency.



EPIC is coming home for OutlineOnline

"From the first time we walked around EPIC, we knew it was where we should be. It took little vision to see the potential benefits we could obtain in residing in such a creative setting. When we saw the studios, recording booths, editing suites and the associated equipment, our minds were running at ten to the dozen of all the things we could do," says Kevin Maddams, MD of OutlineOnline - a small publishing company with big ambitions, publishers of Outline magazine.

"It's an independent voice, slightly irreverent and capturing the spirit of fun in Norwich, aimed at people who want to know what's going on, particularly in the 18-35 market."

There are plans to bring out new editions in other towns and cities across East Anglia. The online version already has some 5,000 subscribers.

"We want to develop the multi-media content of the Online version," says Kevin. "Epic will give us the tools to do that."

Kevin's is the second company to take space at EPIC. For details, see <http://www.outlineonline.co.uk>